

## 22 Chapel Street, Thirsk

£210,000 Freehold

Step inside this beautifully presented semi-detached town house, offering two spacious bedrooms and two contemporary bathrooms, thoughtfully designed for modern living. The home is instantly inviting, with a series of skylights and large windows that ensure every room is bathed in natural light. Open plan living is at the heart of the property, with a stunning kitchen featuring sleek modern units, integrated appliances including an induction hob and oven, and an elegant breakfast bar. The kitchen flows seamlessly into a bright and airy living area, enhanced by sophisticated herringbone floor covering. The neutral decor and new carpeting throughout set a versatile backdrop for your personal style, while vaulted ceilings on the second floor add an impressive sense of space and light.

Both bedrooms provide the ultimate retreat, boasting modern finishes and a calming atmosphere. The bathroom is equipped with modern, white suites, contemporary fixtures, and heated towel rails for added comfort. The main living area features a large bath-tub, ideal for relaxing at the end of the day. Every detail, from the soft carpeted floors to the lighting and open staircase, contributes to a sophisticated, welcoming feel. With its modern brick facade and private entrances,

**NOVE**





#### **Kitchen**

21' 9" x 10' 11" (6.64m x 3.32m)

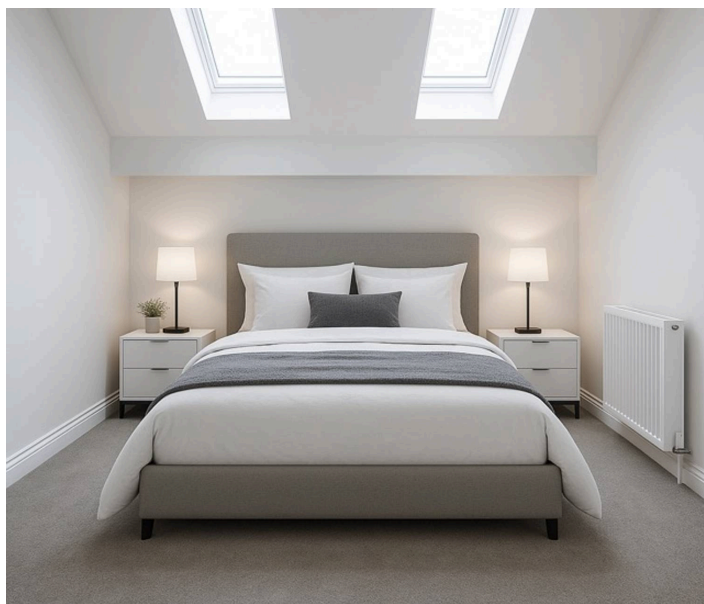
One inside the front door, the modern, open kitchen area welcomes you. With a range of base and wall units in a sage green colour, with wood effect counter tops and built in breakfast bar. The kitchen comes complete with an integrated electric oven and hob with ample space for white goods. A handy storage cupboard houses the gas, combi boiler and electrical RCD unit. Offset from the kitchen is a fantastic reception space for dining or family space. The standout feature is the glass panel, light tunnel which offers a glimpse to the basement level whilst pouring natural light below.



#### **Lower Ground Level**

21' 10" x 11' 2" (6.65m x 3.41m)

A huge reception area, ideal for storage or additional reception space. Natural light pours in from the light tunnel above.



#### **First Floor Bedroom**

11' 6" x 10' 8" (3.51m x 3.24m)

Set to the rear of the property, a double size bedroom with LED lighting, wall mounted radiator and ample space.

#### **Bathroom**

6' 3" x 8' 4" (1.91m x 2.54m)

A modern white suite, consisting of a push button toilet, hand basin and bath with plumbed shower over. The windows are obscured glass and there is a wall mounted, heated towel radiator.

#### **Storage Cupboard**

Set on the first floor landing is a cupboard for additional storage.



### **Kitchen**

21' 9" x 10' 11" (6.64m x 3.32m)

One inside the front door, the modern, open kitchen area welcomes you. With a range of base and wall units in a sage green colour, with wood effect counter tops and built in breakfast bar. The kitchen comes complete with an integrated electric oven and hob with ample space for white goods. A handy storage cupboard houses the gas, combi boiler and electrical RCD unit. Offset from the kitchen is a fantastic reception space for dining or family space. The standout feature is the glass panel, light tunnel which offers a glimpse to the basement level whilst pouring natural light below.

### **Lower Ground Level**

21' 10" x 11' 2" (6.65m x 3.41m)

A huge reception area, ideal for storage or additional reception space. Natural light pours in from the light tunnel above.

### **First Floor Bedroom**

11' 6" x 10' 8" (3.51m x 3.24m)

Set to the rear of the property, a double size bedroom with LED lighting, wall mounted radiator and ample space.

### **Bathroom**

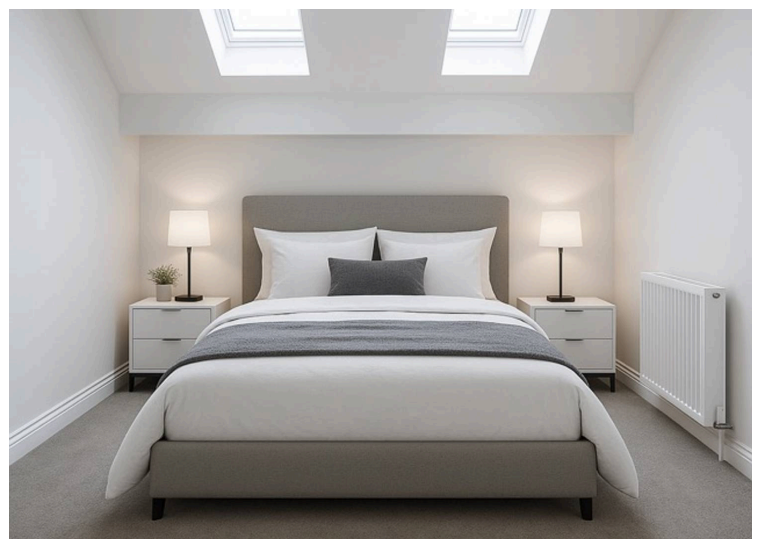
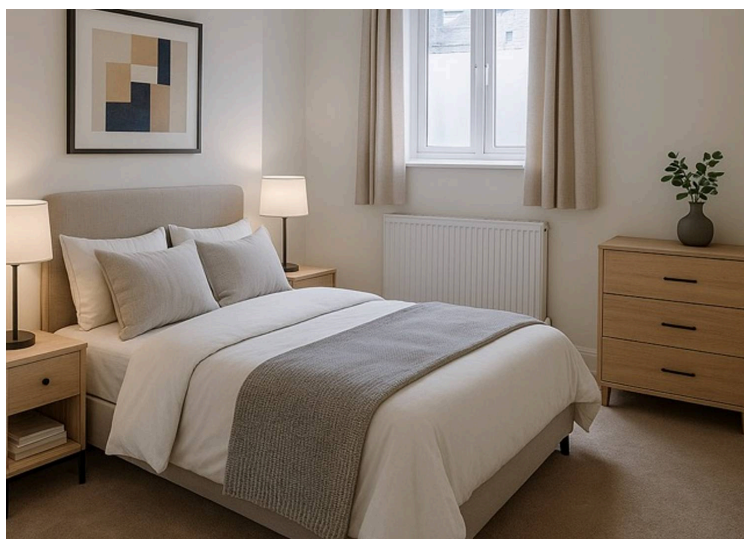
6' 3" x 8' 4" (1.91m x 2.54m)

A modern white suite, consisting of a push button toilet, hand basin and bath with plumbed shower over. The windows are obscured glass and a there is a wall mounted, heated towel radiator.

### **Storage Cupboard**

Set on the first floor landing is a cupboard for additional storage.







NOVE

## My New Project

SUBMITTED BY  
Nove Property  
info@noveproperty.co.uk  
01845470047

CREATED ON  
2025-07-22

LOCATION  
Chapel Street, Thirsk

DETAILS  
Total area: 84.59 m<sup>2</sup>  
Living area: 84.59 m<sup>2</sup>  
Floors: 4  
Rooms: 12

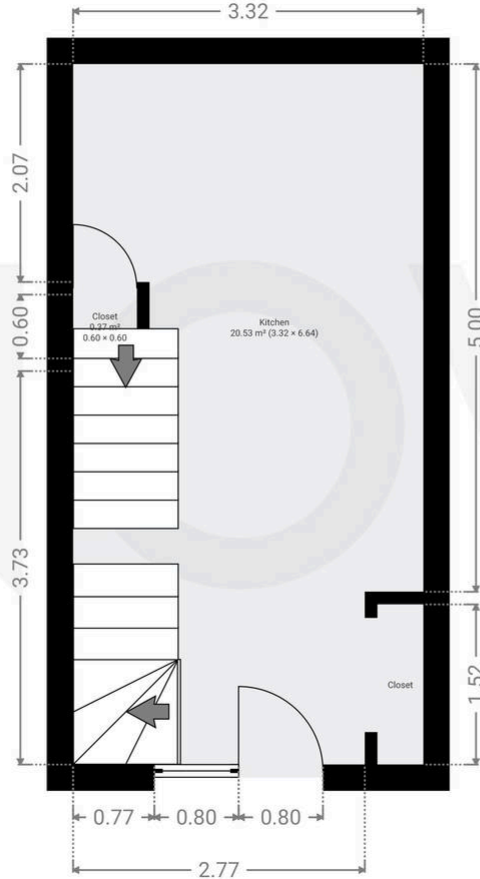
Nove  
info@noveproperty.co.uk  
www.noveproperty.co.uk  
01845 407047

THIS FLOORPLAN IS PROVIDED WITHOUT  
WARRANTY OF ANY KIND. SENSOPIA  
DISCLAIMS ANY WARRANTY INCLUDING,  
WITHOUT LIMITATION, SATISFACTORY QUALITY  
OR ACCURACY OF DIMENSIONS.

0.0 0.5 1.0 1.5m  
1:48

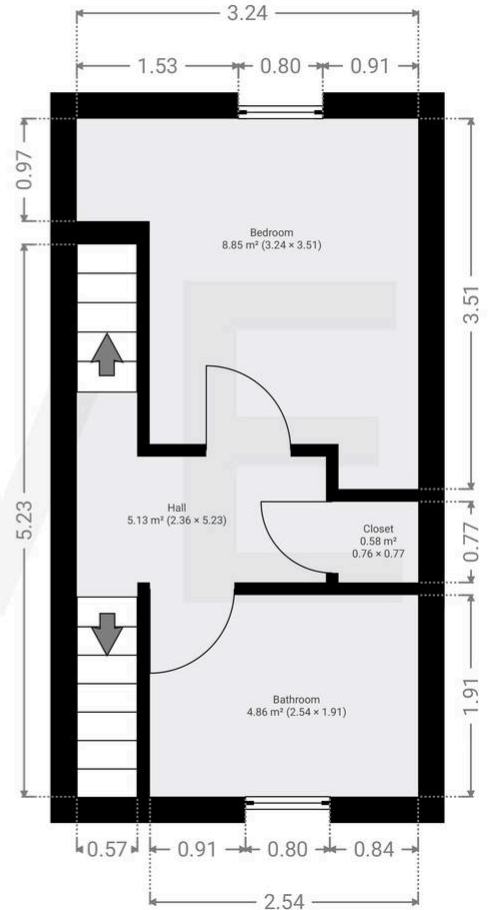
### ▼ Ground Floor

TOTAL AREA: 21.55 m<sup>2</sup> · LIVING AREA: 21.55 m<sup>2</sup> · ROOMS: 3



### ▼ 1st Floor

TOTAL AREA: 19.41 m<sup>2</sup> · LIVING AREA: 19.41 m<sup>2</sup> · ROOMS: 4



You can include any text here. The text can be modified upon generating your brochure.



NOVE

## My New Project

SUBMITTED BY  
Nove Property  
info@noveproperty.co.uk  
01845470047

CREATED ON  
2025-07-22

LOCATION  
Chapel Street, Thirsk

DETAILS  
Total area: 84.59 m<sup>2</sup>  
Living area: 84.59 m<sup>2</sup>  
Floors: 4  
Rooms: 12

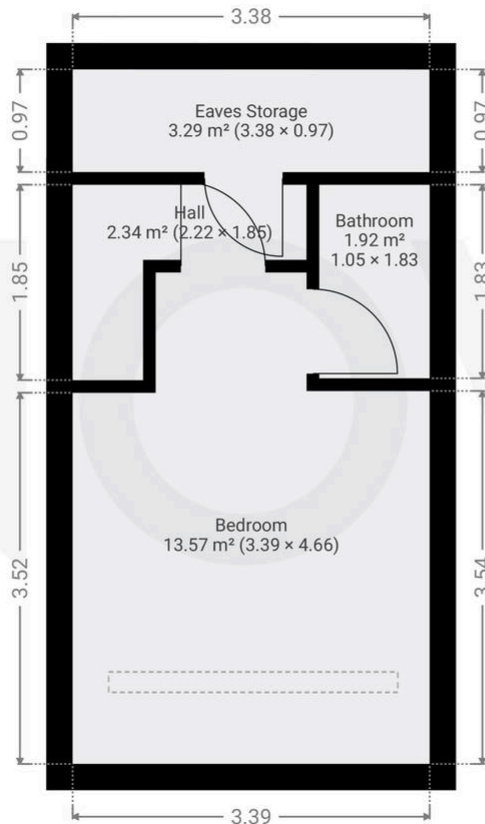
Nove  
info@noveproperty.co.uk  
www.noveproperty.co.uk  
01845 407047

THIS FLOORPLAN IS PROVIDED WITHOUT  
WARRANTY OF ANY KIND. SENSOPIA  
DISCLAIMS ANY WARRANTY INCLUDING,  
WITHOUT LIMITATION, SATISFACTORY QUALITY  
OR ACCURACY OF DIMENSIONS.

0.0 0.5 1.0 1.5m  
1:48

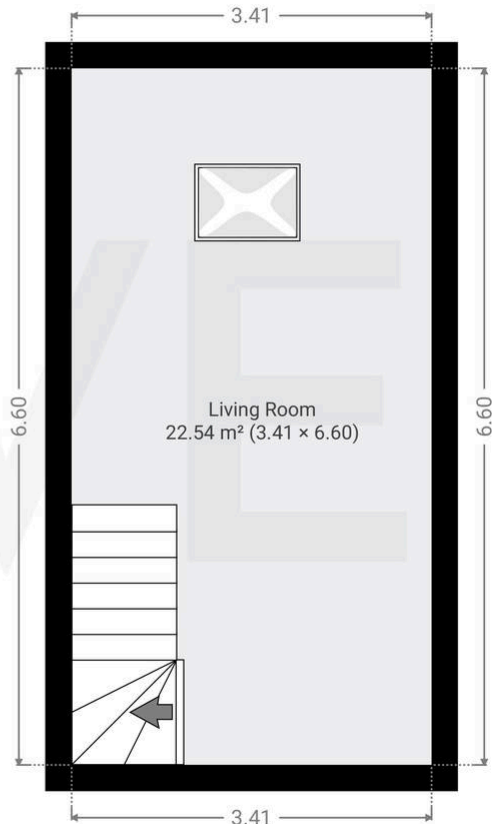
### ▼ 2nd Floor

TOTAL AREA: 21.10 m<sup>2</sup> • LIVING AREA: 21.10 m<sup>2</sup> •  
ROOMS: 4



### ▼ Basement • Level 1

TOTAL AREA: 22.54 m<sup>2</sup> • LIVING AREA:  
22.54 m<sup>2</sup> • ROOMS: 1



You can include any text here. The text can be modified upon generating your brochure.

